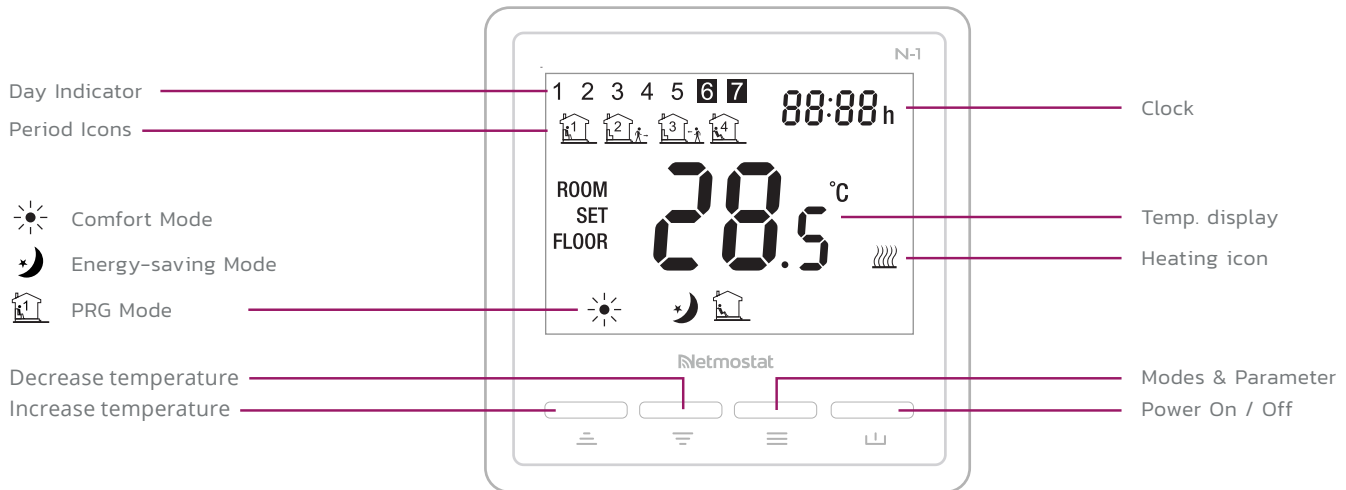


N-1 smart thermostat

netmostat.com



WIFI CONNECTION

Please scan the QR code for detailed instruction or visit netmostat.com/connection



SETTING COMFORT MODE AND ENERGY-SAVING MODE

Switch between modes using the button.

1. Choosing the Comfort Mode you may adjust temperature using or buttons.
2. Choosing the Energy-saving Mode you may adjust temperature using or buttons.

CLOCK & 5+1+1 PRG SETTING

PRG function allows you to set different temperatures throughout the day. For example, you may want the home warm in the morning, cooler when you leave your home for the day, and then warmer in the evening when you return home. The thermostat offers 5+1+1 programming option, four different temperature levels for each day. Default comfort levels are pre-programmed; still you can change them easily with the following method:



Long press button for 5 seconds,

1. press and to adjust the clock (min-hour-weekday), each press of will go into next time setting
2. after clock adjustment, press to 5+1+1 mode setting. By pressing and you can set the desired time and temperature of each period. (Weekday- period- time- temp.) Each press of button will go into next item setting.

DEFAULT VALUES

Period	Wake up		Leave Home		Return Home		Sleep	
	Time	Temp.	Time	Temp.	Time	Temp.	Time	Temp.
1-5 (Mon.-Fri.)	7:00	22°C	8:30	19°C	17:00	22°C	22:00	19°C
6 (Sat.)	8:00	22°C	8:30	22°C	17:00	22°C	22:00	19°C
7 (Sun.)	8:00	22°C	8:30	22°C	17:00	22°C	22:00	19°C

KEY-LOCK FUNCTION

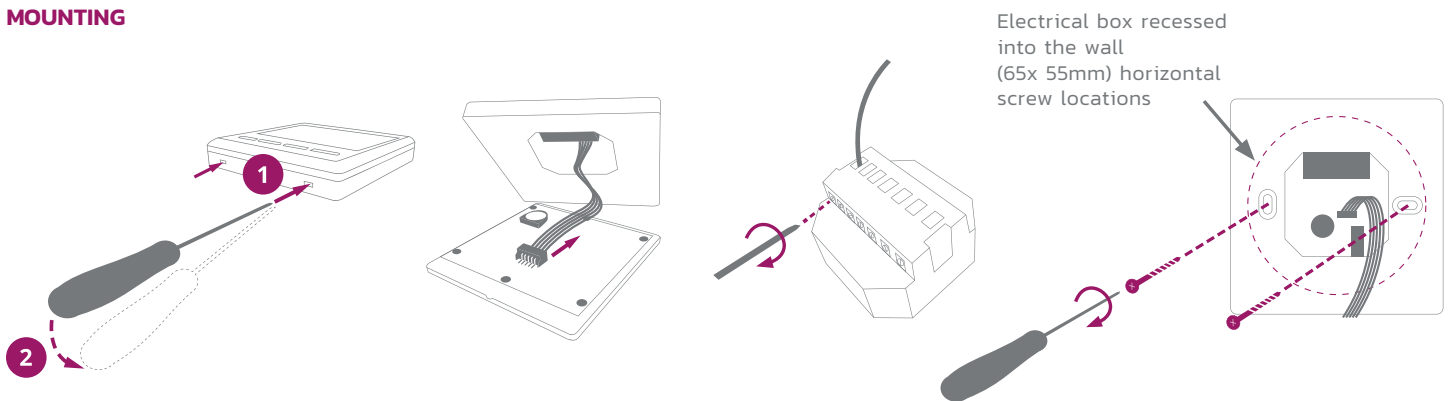
In order to avoid unauthorised access (hotels, public areas, child room) you can activate the key lock function from parameter settings page 12. To unlock your device long press the  and  buttons for ~5 seconds.

PARAMETER SETTINGS

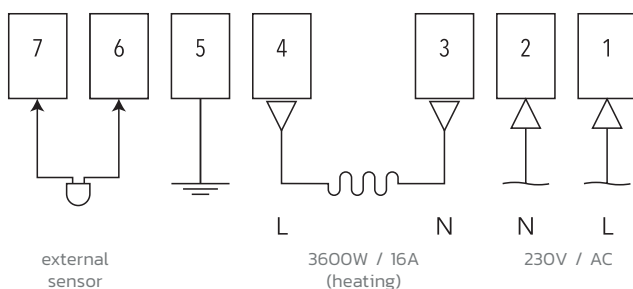
Under power off mode, to access or modify parameter settings, please long press  and  buttons simultaneously for ~8 seconds until the MENU appear showing 01 which is menu 1. Each press of the  button will go to the next MENU.

Menu	Description	Range	Default
01	Temp. Offset	-8°C ~ 8°C	0
02	Set Point Max.	5°C ~ 80°C	35°C
03	Set Point Min.	5°C ~ 80°C	5°C
04	Sensor Select	ROOM FLOOR ROOM + FLOOR	
05	Frost Protection Temp.	5°C ~15°C	5°C
06	Surface Temp. Display	Read Only	
07	High Temp. Protection	20°C ~ 80°C	32°C
11	Reset	rE (Yes)	
12	Key lock	0 - off, 1 - on	0
14	OWD function ON/OFF select	0 - off, 1 - on	0
15	OWD Detect Time Select	2 ~ 30 mins	15 mins
16	OWD Drop temp. select (within detect time)	2 / 3 / 4°C	2°C
17	OWD Delay time select (Return to previous working status)	10 ~ 60 mins	30 mins
18	The temp. diff to exit high protection mode	1°C ~ 3°C	1°C
19	External sensor temp. offset	-8°C ~ 8°C	0
20	Energy optimisation	1: electric radiator 2: heating panel 3: ceiling heating 4: floor heating	1
22	Software version		

MOUNTING



WIRING DIAGRAM



SPECIFICATION

Operating voltage:	230V AC, 50/60 Hz
Capacity:	3600W/16A
Standby consumption:	0.5W
Display:	LCD White backlight
External Sensor:	NTC 10kΩ @ 25°C
IP protection rating:	IP 30
Housing:	White ABS to UL94-5 fire standard
Temperature settings:	5°C-80°C, 0.5°C
Accuracy:	± 0.5°C
PRG options:	5+1+1, four cycles each day
Housing dimensions:	86 mm × 88 mm × 18 mm
Relay inst. dimensions:	Ø 65 mm diameter, standard